

THE ATELIER FOR CUSTOM MOTOR PRODUCTIONS



# SPINDLE MOTORS

# HISTORY

**FOUNDED IN 1984**, Motorlift S.r.l. quickly established its world leadership in the production of electric lift motors.

In the 2000s, we marked the booming of the lift sector, producing up to 3.000 motors monthly. **DIVERSIFYING OUR OFFER**, we then distinguished ourselves in machine tools, gaining the trust of a growing number of customers.

Our range includes **CONVENTIONAL AND PERMANENT MAGNET SYNCHRONOUS MOTORS**.

# INNOVATION

We've embraced **NEW SECTORS**, developing motors for the marine sector, industrial ventilation, and collaborations with **CUSTOMIZED ELECTRIC MOTOR** design companies.

This commitment underscores our constant pursuit of cutting-edge solutions.

With a global vision, we've adapted our structure to meet emerging challenges, keeping **ITALIAN QUALITY** at the heart of every product, designed and manufactured in-house in our factory.



# VISION

We envision a future where efficiency and performance define the exceptional.

Motorlift's vision is to be the **DRIVER OF EVOLUTION** in various sectors, driving transformation towards more competitive and **SUSTAINABLE SOLUTIONS**.

We strive to be the supplier of choice, anticipating the needs of different sectors and driving innovation with a commitment to excellence and technological advancement.

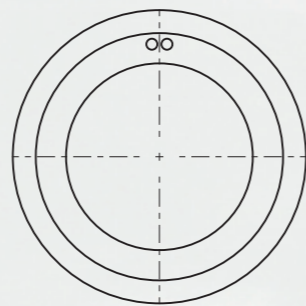
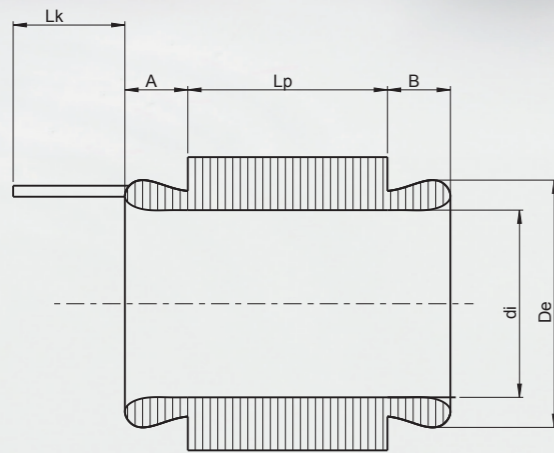
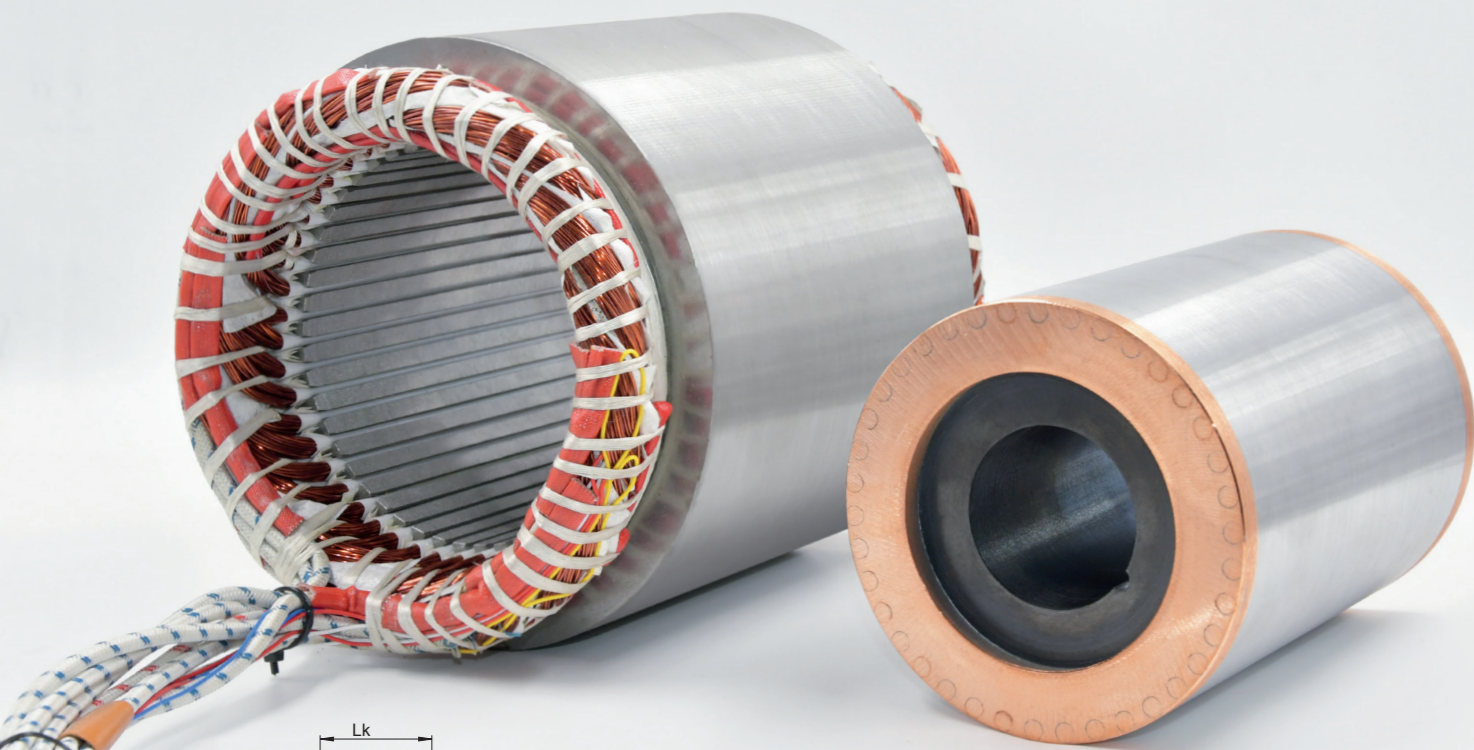
In this dynamic context, Motorlift's mission is clear: to be a reliable partner in the **DEVELOPMENT OF CUSTOMIZED SOLUTIONS**, adapted to changing business needs.

We provide our **KNOW-HOW AND EXPERIENCE** gained over more than 40 years to guide our customers through the evolution of their industry.

Our mission is to meet our customers' challenges, shaping a future where success is the result of **STRONG PARTNERSHIP** and tailor-made solutions.

# MISSION

# ASYNCHRONOUS MOTOR SOLUTIONS



## STRONG STRUCTURE FOR STRONG APPLICATIONS

Motorlift asynchronous motors feature a solid construction that distinguishes them for reliability, durability and quiet operation. Their ability to handle heavy loads and adverse conditions makes them ideal for the heaviest applications.

## OPTIMAL PERFORMANCE-COST RATIO

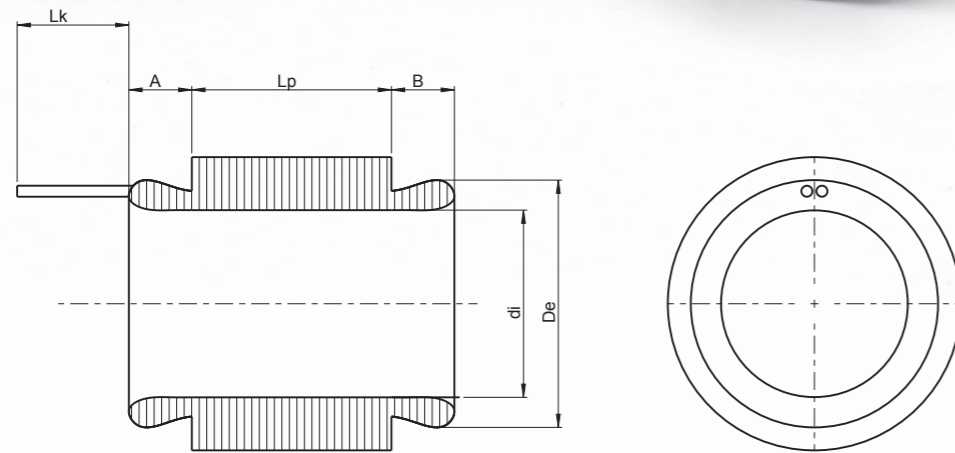
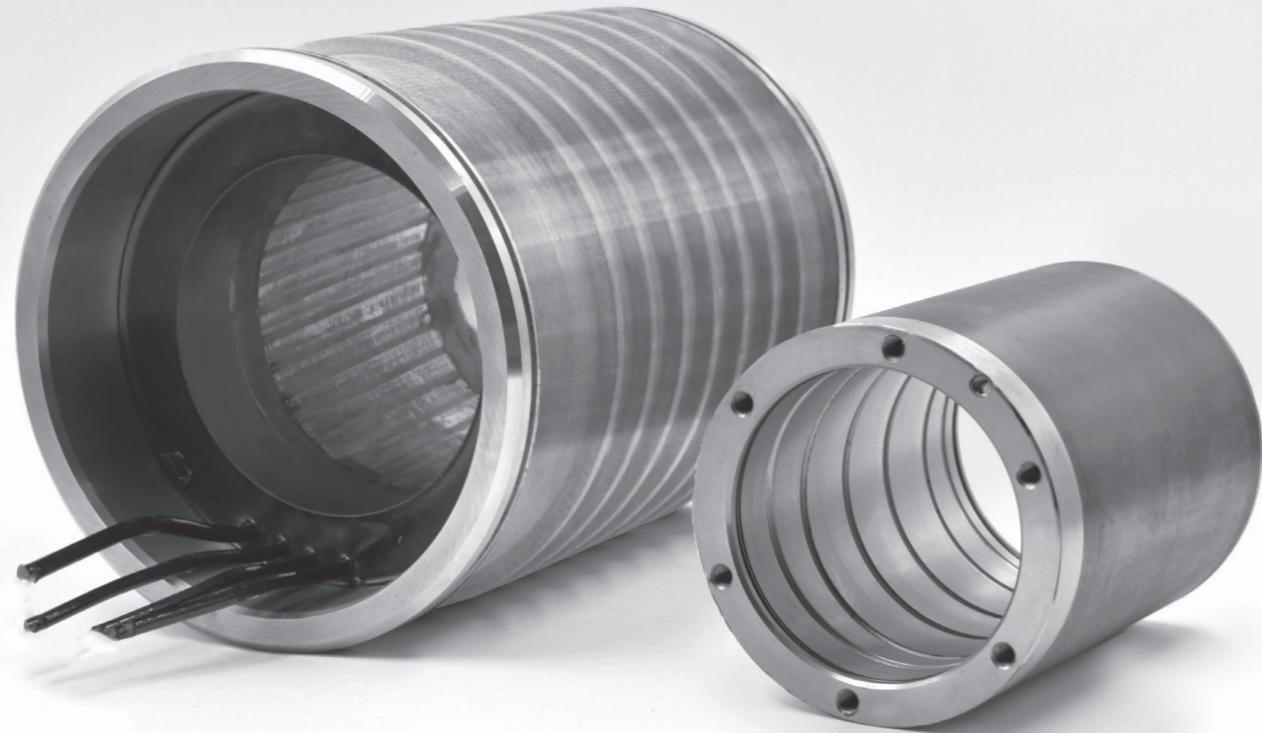
Their optimal performance-cost ratio makes them the ideal choice for those seeking maximum efficiency without sacrificing affordability. Choose Motorlift excellence without compromise.

## BIG RANGE OF APPLICATIONS AND SOLUTIONS

With the ability to adapt to different requirements, they are the perfect answer to complex challenges in any context. Choose the flexibility that only asynchronous motors by Motorlift can offer.

D [mm]	2 POLES					4 POLES				
	Lp [mm]	Pmin [kW]	Pmax [kW]	Hz(min/max)	rpm(min/max)	Lp [mm]	Pmin [kW]	Pmax [kW]	Hz(min/max)	rpm(min/max)
70	40	0,35	3,5	100/1000	6000/60000					
	60	0,58	5,8	100/1000	6000/60000					
	100	1	10	100/1000	6000/60000					
83	50 (min)	0,71	5,7	100/800	6000/48000	50 (min)	0,55	4,5	100/1000	3000/30000
	70	1,1	8,4	100/800	6000/48000	70	0,82	7	100/1000	3000/30000
	90 (max)	1,4	11,5	100/800	6000/48000	90 (max)	1,1	9	100/1000	3000/30000
90	40 (min)	0,71	5	100/700	6000/42000	60 (min)	1	10	100/1000	3000/30000
	60	1,2	7,9	100/700	6000/42000	100	1,6	16,5	100/1000	3000/30000
	100 (max)	2,1	14,4	100/700	6000/42000	140 (max)	2,5	23	100/1000	3000/30000
106	50 (min)	1,3	7,1	100/600	6000/36000	60 (min)	1,4	10	100/800	3000/24000
	80	2,4	12,1	100/600	6000/36000	100	2,4	18	100/800	3000/24000
	120 (max)	3,9	19	100/600	6000/36000	120 (max)	3	22	100/800	3000/24000
120	60 (min)	2,5	12	100/500	6000/30000	60 (min)	2	10	100/600	3000/18000
	90	3,9	17,9	100/500	6000/30000	90	3	15,5	100/600	3000/18000
	125 (max)	6	26	100/500	6000/30000	120 (max)	4,5	19,8	100/600	3000/18000
135	110	6,5	28	100/500	6000/30000	50 (min)	2,2	22	100/1000	3000/30000
						100	5,4	54	100/1000	3000/30000
						155 (max)	8,3	83	100/1000	3000/30000
150						50 (min)	3,5	12	100/400	3000/12000
						100	8	27	100/400	3000/12000
						220 (max)	18	62	100/400	3000/12000
170						50 (min)	4,6	21	100/500	3000/15000
						150	17	72	100/500	3000/15000
						220 (max)	26	104	100/500	3000/15000
200						70 (min)	11	33	100/400	3000/12000
						160	27	81	100/400	3000/12000
						260 (max)	45	135	100/400	3000/12000
240						120(min)	28	74	100/300	3000/9000
						200	50	135	100/300	3000/9000
						300(max)	77	205	100/300	3000/9000
D	6 POLES					8 POLES				
	Lp [mm]	Pmin [kW]	Pmax [kW]	Hz(min/max)	rpm(min/max)	Pmin	Pmax	Hz(min/max)	rpm(min/max)	
106	50 (min)	0,5	10	50/1000	1000/20000					
	80	1	20	50/1000	1000/20000					
	140 (max)	1,8	35	50/1000	1000/20000					
120	60(min)	0,86	12	50 /700	1000/14000					
	80	1,13	16	50/700	1000/14000					
	100(max)	1,4	20	50/700	1000/14000					
135	90 (min)	1,8	22	50/600	1000/12000					
	125	2,5	30	50/600	1000/12000					
	155 (max)	3	36	50/600	1000/12000					
150	100 (min)	2,8	33	50/600	1000/12000					
	150	4	48	50/600	1000/12000					
	200 (max)	5,4	65	50/600	1000/12000					
170	120 (min)	4,4	44	50/600	1000/12000					
	150	5,8	58	50/600	1000/12000					
	200 (max)	7,5	75	50/600	1000/12000					
200						120(min)	3,8	23	34/200	500/3000
						220	8,7	52	34/200	500/3000
						260(max)	10,3	62	34/200	500/3000
240	100(min)	8,4	42	50/300	1000/6000	210(min)	12	62	34/167	500/2500
	170	15	75	50/300	1000/6000	255	17,5	88	34/167	500/2500
	240(max)	21	105	50 /300	1000/6000	300(max)	23	114	34/167	500/2500

# SYNCHRONOUS MOTOR SOLUTIONS



## HIGH ACCURACY WITH ENGINE CHARACTERIZATION!

Each motor is tested according to norm EM6003 – EN60270. Having a brake bench allow us to obtain the engine characterization in order to obtain in a short time the optimal performances.

## COMPACT DESIGN WITH LOT OK POWER

Our synchronous motors are characterised by their extraordinary power density, making them ideal for applications where space is limited but performance cannot be compromised.

## MORE EFFICIENCY UP TO 98%!

Motorlift motors offer high efficiency due to their unique magnetic circuit design, allowing to improve power consumption and contributing to carbon neutrality.

D [mm]	2 POLES					4 POLES				
	Lp [mm]	Pmin [kW]	Pmin [kW]	Hz(min/max)	rpm(min/max)	Lp [mm]	Pmin [kW]	Pmax [kW]	Hz(min/max)	rpm(min/max)
<b>70</b>	40	0,35	3,5	100/1000	6000/60000					
	60	0,58	5,8	100/1000	6000/60000					
	100	1	10	100/1000	6000/60000					
<b>83</b>	50 (min)	0,71	5,7	100/800	6000/48000	50 (min)	0,55	4,5	100/1000	3000/30000
	...	...	...	...	...	...	...	...	...	...
	70	1,1	8,4	100/800	6000/48000	70	0,82	7	100/1000	3000/30000
	...	...	...	...	...	...	...	...	...	...
	90 (max)	1,4	11,5	100/800	6000/48000	90 (max)	1,1	9	100/1000	3000/30000
<b>90</b>	40 (min)	0,71	5	100/700	6000/42000	60 (min)	1	10	100/1000	3000/30000
	60	1,2	7,9	100/700	6000/42000	100	1,6	16,5	100/1000	3000/30000
	100 (max)	2,1	14,4	100/700	6000/42000	140 (max)	2,5	23	100/1000	3000/30000
<b>106</b>	50 (min)	1,3	7,1	100/600	6000/36000	60 (min)	1,4	10	100/800	3000/24000
	80	2,4	12,1	100/600	6000/36000	100	2,4	18	100/800	3000/24000
	120 (max)	3,9	19	100/600	6000/36000	120 (max)	3	22	100/800	3000/24000
<b>120</b>	60 (min)	2,5	12	100/500	6000/30000	60 (min)	2	10	100/600	3000/18000
	90	3,9	17,9	100/500	6000/30000	90	3	15,5	100/600	3000/18000
	125 (max)	6	26	100/500	6000/30000	120 (max)	4,5	19,8	100/600	3000/18000
<b>135</b>	110	6,5	28	100/500	6000/30000	50 (min)	2,2	22	100/1000	3000/30000
						100	5,4	54	100/1000	3000/30000
						155 (max)	8,3	83	100/1000	3000/30000
<b>150</b>						50 (min)	3,5	12	100/400	3000/12000
						100	8	27	100/400	3000/12000
						220 (max)	18	62	100/400	3000/12000
<b>170</b>						50 (min)	4,6	21	100/500	3000/15000
						150	17	72	100/500	3000/15000
						220 (max)	26	104	100/500	3000/15000
<b>200</b>						70 (min)	11	33	100/400	3000/12000
						160	27	81	100/400	3000/12000
						260 (max)	45	135	100/400	3000/12000
<b>240</b>						120(min)	28	74	100/300	3000/9000
						200	50	135	100/300	3000/9000
						300(max)	77	205	100/300	3000/9000



# THE PERFECT SYNERGY: MAGNETS AND CARBON



Motorlift propels innovation boundaries with high-performance magnets, the pulsating core of our motors.

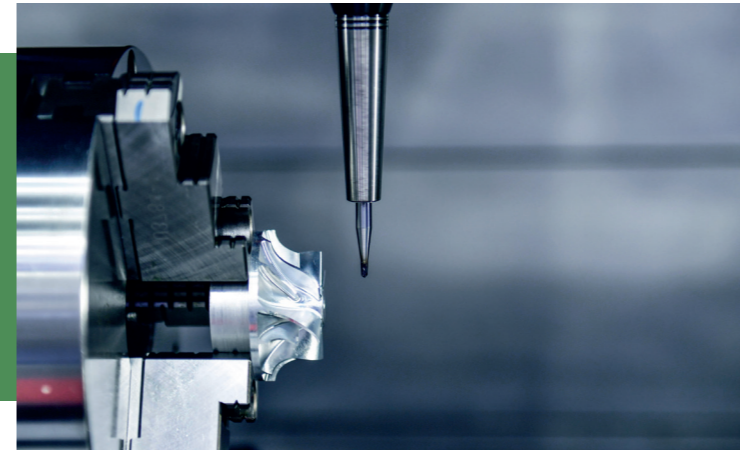
Our avant-garde technology propels excellence, mastering **VARIOUS MAGNETS** in diverse markets, offering high-quality, customized solutions.

In synchronous motors, our beating heart is not just advanced magnetic tech but also carbon's versatility. Customization, achieved through **CARBON TUBES** or

carbon **BENDING** solutions, showcases our dedication to exceeding expectations. Carbon, a pivotal ally, optimizes performance and durability.

Our commitment to innovation and strategic carbon use delivers high-quality solutions at competitive prices. With Motorlift, you invest in a vision redefining standards in performance and reliability.

# DRIVING EXCELLENCE ACROSS INDUSTRIES



Revolutionize precision with Motorlift in the **MACHINE TOOL** sector. Our engines redefine speed and accuracy, offering both asynchronous and synchronous solutions up to 50,000rpm. Trust Motorlift to design and power your machinery, ensuring optimal performance in every rotation.



Command the waters and roads with Motorlift's **MARINE** and **MOBILITY SOLUTIONS**. Our highspeed engines, crafted for efficiency, not only deliver unparalleled performance but also feature a design optimized for extracting maximum energy use from batteries. Experience the power of Motorlift, where speed meets reliability and energy efficiency.



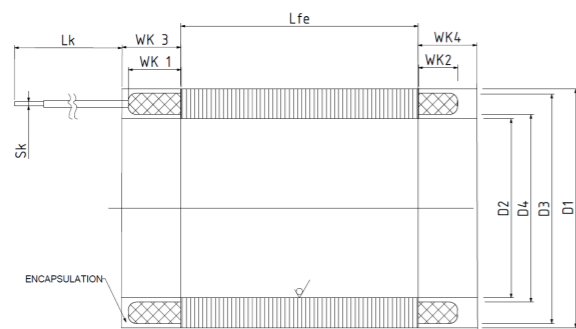
Power sustainable futures with Motorlift in the **RENEWABLE ENERGY** sector. Our engines, meticulously designed for efficiency and longevity, lead the charge in green energy solutions. Partner with Motorlift for a future where renewable energy meets unmatched performance and durability.

COMPANY:  
PHONE:  
E-MAIL:

CONTACT PERSON:  
FAX:  
DATE:

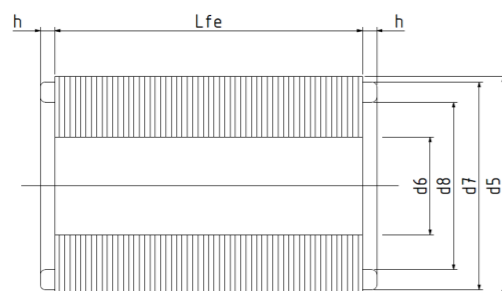
ASYNCHRONOUS    SYNCHRONOUS    TORQUE   NUMBER OF POLES:

**STATOR**



	mm
Lk	.....
WK1	.....
WK3	.....
Lfe	.....
WK2	.....
WK4	.....
D2	.....
D4	.....
D3	.....
D1	.....

**ROTOR**



	mm
h	.....
Lfe	.....
d5	.....
d6	.....
d7	.....
d8	.....

**Cooling**

- Water cooling
- Oil cooling
- Pressed air c.

**Sensing**

- PTC130
- PT1000
- Thermoswitch 130°C

**Impregnation**

- Resin impregnated
- Encapsulated without...

**Design synchronous rotor**

- Magnetsystem directly assembled onto shaft
- Magnetsystem directly assembled onto rotor sleeve

**Inverter**

Manufacturer: \_\_\_\_\_  
Type: \_\_\_\_\_

**Design synchronous rotor**

- Cage material Al
- Cage material Cu

**ELECTRICAL DATA**

Connction										
Duty type										
Poles										
Torque	[Nm]	0,00								
Shaft power	[kW]	0,00								
Efficiency	%									
Shaft speed	[rpm]	0								
Voltage DC	[V]	0								
Current DC	[A]	0,00								
Frequency	[Hz]	0								



# CHOOSE MOTORLIFT





**Motorlift S.r.l.**

Strada Statale per San Martino 2  
26867 Somaglia (Lodi)

**P.IVA** 09957250963

**Mail:** [info@motorlift.it](mailto:info@motorlift.it)

**Phone:** +39 0377 570175

[www.motorlift.it](http://www.motorlift.it)